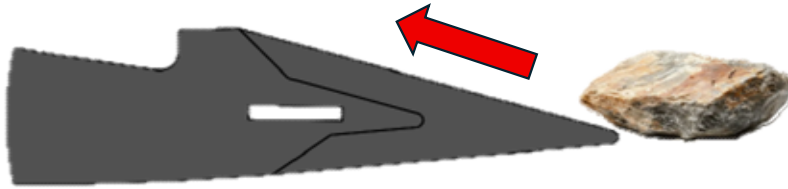
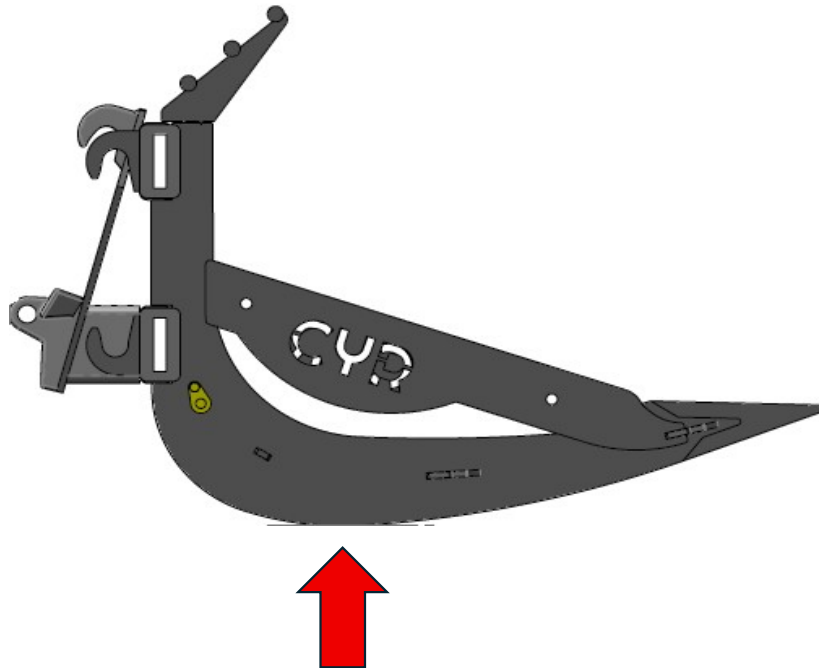


Selling points / Les avantages fourche cyr

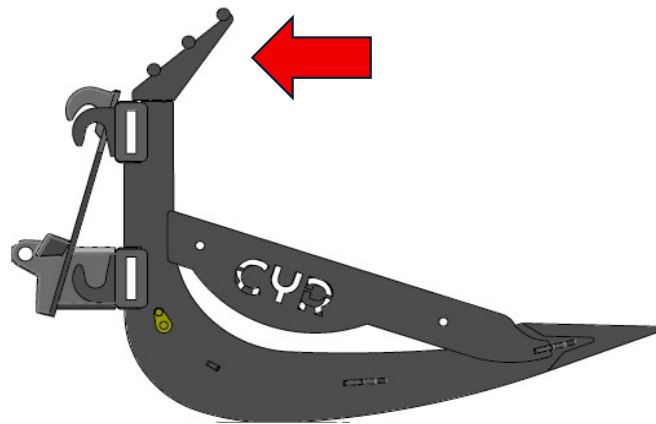
1. Loading rocks without any obstruction. / Chargement des roches sans obstacle.



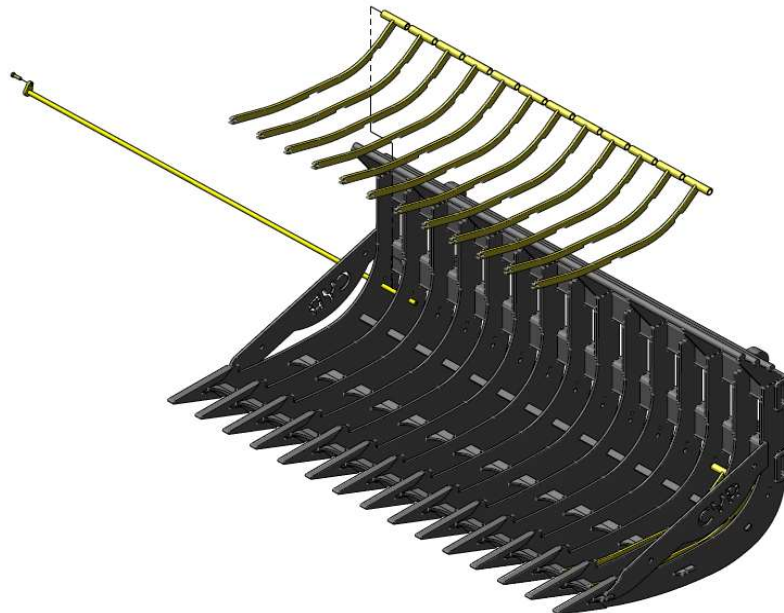
2. Curved bottom that acts as a lever effect facilitating the extraction of debris while reducing the effort required from the hydraulic cylinders. / Fond courbé qui agit comme un effet de levier facilitant l'extraction des débris tout en réduisant l'effort des cylindres hydraulique.



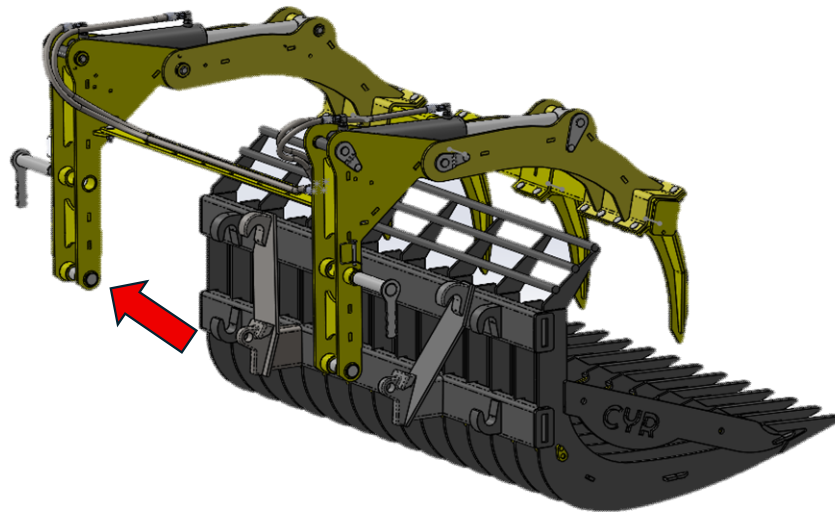
3. Standard stone guard with all forks for the protection of hydraulic cylinders. / Pare-pierre de série avec toutes les fourches pour la protection des cylindres hydraulique.



4. Easily removable screening rod for sifting different sizes of material. / Barre de tamis facilement amovible pour tamiser différentes grosseurs de matériel.



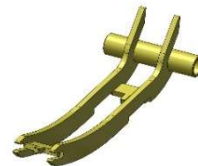
5. Possibility of a modular hydraulic grapple that can be easily dismantled if needed. / Possibilité d'un grappin hydraulique modulaire et facilement démontable au besoin.



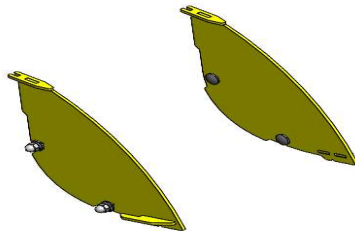
6. / Modular fork with several options available depending on your work and equipment. .Fourche modulaire avec plusieurs options disponible selon vos travaux et votre équipement.



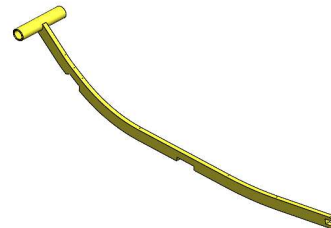
Tamis triple / Tripple screening rod



Tamis double / Double screening rod



Coté haut / high side



Tamis simple / Simple screening rod

7. Made of hardened steel. / Construction robuste en acier trempé.



8. Made in Canada. / Fabrication canadienne.



GSC Serie

Forks for full size wheel or track loader (Skid steer)

Suitable for tractors, wheel loaders and skidsteers

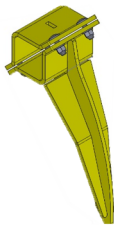
- * Heavy construction with hardened steel
- * Thickness of teeth 3/8"
- * Thickness of tips 1"
- * Integrated stone guard for maximum protection
- * Spacing of 4 5/8" between main teeth
- * Quick removeable screening rod for sifting (reduce space at 2 1/8")
- * Color : dark grey with screening rod yellow
- * Deep 45"
- * High 26"



| Description | Screening rod (qty) | Weight (lbs) | Width (in) | Mounting type | Part # | Price (Cad) |
|---|---------------------|--------------|------------|---------------|------------|-------------|
| 71" Commercial full size fork For Skid steer | 14 | 781 | 71" | Blank | GSC071 999 | 5 750.00 \$ |
| | | 858 | 71" | Skidsteer | GSC071 034 | 6 150.00 \$ |
| 76" Commercial full size fork For Skid steer | 15 | 843 | 76" | Blank | GSC076 999 | 6 400.00 \$ |
| | | 920 | 76" | Skidsteer | GSC076 034 | 6 700.00 \$ |
| 81" Commercial full size fork For Skid steer | 16 | 880 | 81" | Blank | GSC081 999 | 6 400.00 \$ |
| | | 957 | 81" | Skidsteer | GSC081 034 | 6 700.00 \$ |

| Options | | Weight (lbs) | | Mounting type | Part # | Price (Cad) |
|-----------------------------------|------------|--------------|--|------------------|---------|-------------|
| Grapple for GSC071 -076 (4 tines) | unit price | 540 | | Easy clip system | GRAS071 | 4 500.00 \$ |
| Grapple for GSC081 (5 tines) | unit price | 580 | | Easy clip system | GRAS081 | 4 750.00 \$ |
| Tine (extra tine for grapple) | unit price | 22.2 | | Bolted | DTA-025 | 200.00 \$ |

DTA-025



GRAS071-076-081

- *** Come with 2x 60" hose with 1/2 male NPT fitting
- *** Hyraulic couplers sold separately

